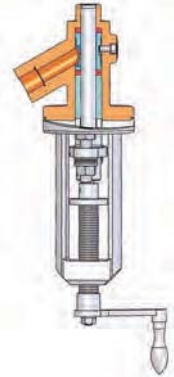


SchuF Fetterolf Sampling Valve - Please specify your inquiry:

CONTACT INFORMATION:

Name:
 Company:
 City:
 Country/State:
 Phone:
 Fax:
 E-Mail:



MODEL/QUANTITY:

Please choose: Quantity:

32FR (Rod Seal®):
 32PG (Metal to Metal Seal):
 32FG (Ram Seal®):
 Other, including custom Solution:

MATERIALS:

Wetted Parts: 316 stainless (standard) or other:
 Medium/Temperature / Pressure:

HEATING JACKET:

Yes or No:
 Heating Medium:
 Temperature & Pressure:
 Jacket Connections:

ACTUATION:

Crank Handle (Standard)
 Handwheel:
 Deadman's Handle:
 Pneumatic, Spring Return or Double-acting:
 Accessories (Solenoid Valves, Limit Switches etc.):

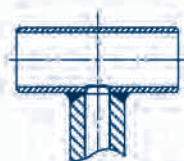
CONNECTIONS (Inlet & Outlet):

Rating & Size:
 Threaded / ① Flanged / Weld Socket / Other:
 ② T-Piece (please specify Pipe Size, Material & Rating):
 ③ Half-Coupling (please specify Pipe Size, Material & Rating):
 ④ Valve Body with Flushing Port (Yes or No):
 ⑤ Ram Extension / ⑥ Fixed Seat (x & d1 - Dimensions):
 ⑦ Extended Body / Seat (x & d1 - Dimensions):
 ⑧ Extended Body / Seat & extra Ram Extension (x & d1 & p - Dimensions):
 Other Accessories (e.g. Sampling Bottle etc.):

OPTIONS: Extended Rams & Bodies, different Valve Connections



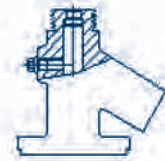
① Flange Connection



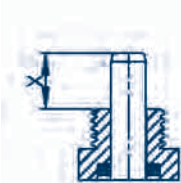
② T-Piece



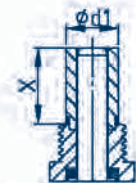
③ Contoured Half-Coupling
(can also be non-contoured)



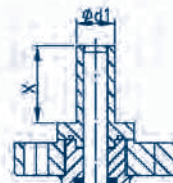
④ Flushing Port



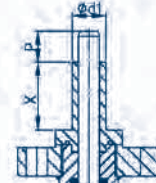
⑤ Ram Extension



⑥ Fixed Seat



⑦ Extended Body / Seat



⑧ Extended Body / Seat & extra
Ram Extension &